

Expert-Level 3D Body Assessment Mirror

Visbody-M60

# All-in-One Solution for 3D Body Assessment

Visbody AI  is here

[www.visbody.com](http://www.visbody.com)



VISBODY

# Visbody-M60

Expert-Level 3D Body Assessment Mirror

**An advanced intelligent body assessment solution designed for diverse training scenarios — from fitness and beauty to weight loss and recovery.**

Built on Visbody's proprietary Body++ digital health technology, combining advanced body composition analysis, instant high-precision 3D scanning, and self-developed AI models for comprehensive body assessments.

Visbody AI  is here



# Three Key Features

01

## WellnessHub Digital Health Management Platform

Built on a proprietary cross-server large model; driven by a dual-core system: Visbody AI + DeepSeek, fully integrated with the entire Visbody product line. Enables one-stop body assessment, training planning, follow-up, and client data management in a seamless closed loop.

[www.visbody.com](http://www.visbody.com)



02

## High-Precision All-in-One Turntable

Visbody's self-developed high-precision platform integrates 8-electrode, multi-frequency BIA measurement with multi-functional body circumference and posture data capture – delivering a safe, stable, and accurate assessment experience.

03

## Intelligent Algorithms & Accurate 3D Body Modeling

Integrated BIA + BDA algorithm for accurate body composition analysis; high-precision 3D scanning for ultra-detailed human body modeling.

VISBODY

# WellnessHub Digital Health Management Platform

Visbody's AI system is custom-built for fitness and wellness centers, integrating core AI models and data to create a dedicated digital hub that enables the shift from traditional operations to AI-driven smart services.

## Unified Digital Hub for Body Assessment Terminals

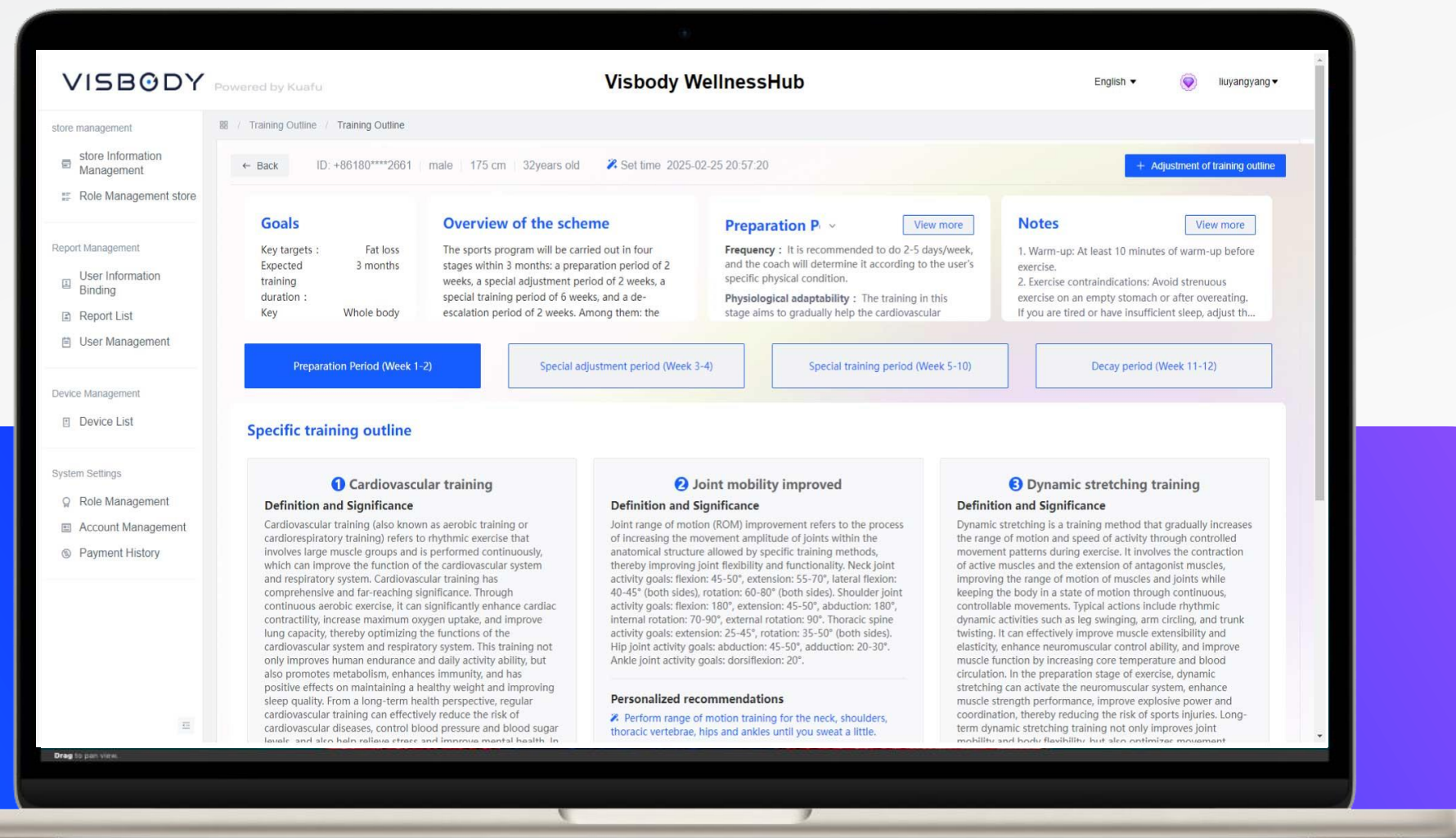
Supports multi-level account management and operations, providing an all-in-one platform for assessment, planning, training, follow-up, and store data management. Enables full visualization and intelligent control of all devices across locations.

## Dual AI Model Powered

Equipped with our self-developed Kuafu model plus Deepseek language model, delivering exclusive features like AI report analysis, personalized training plan creation, and interactive Q&A.

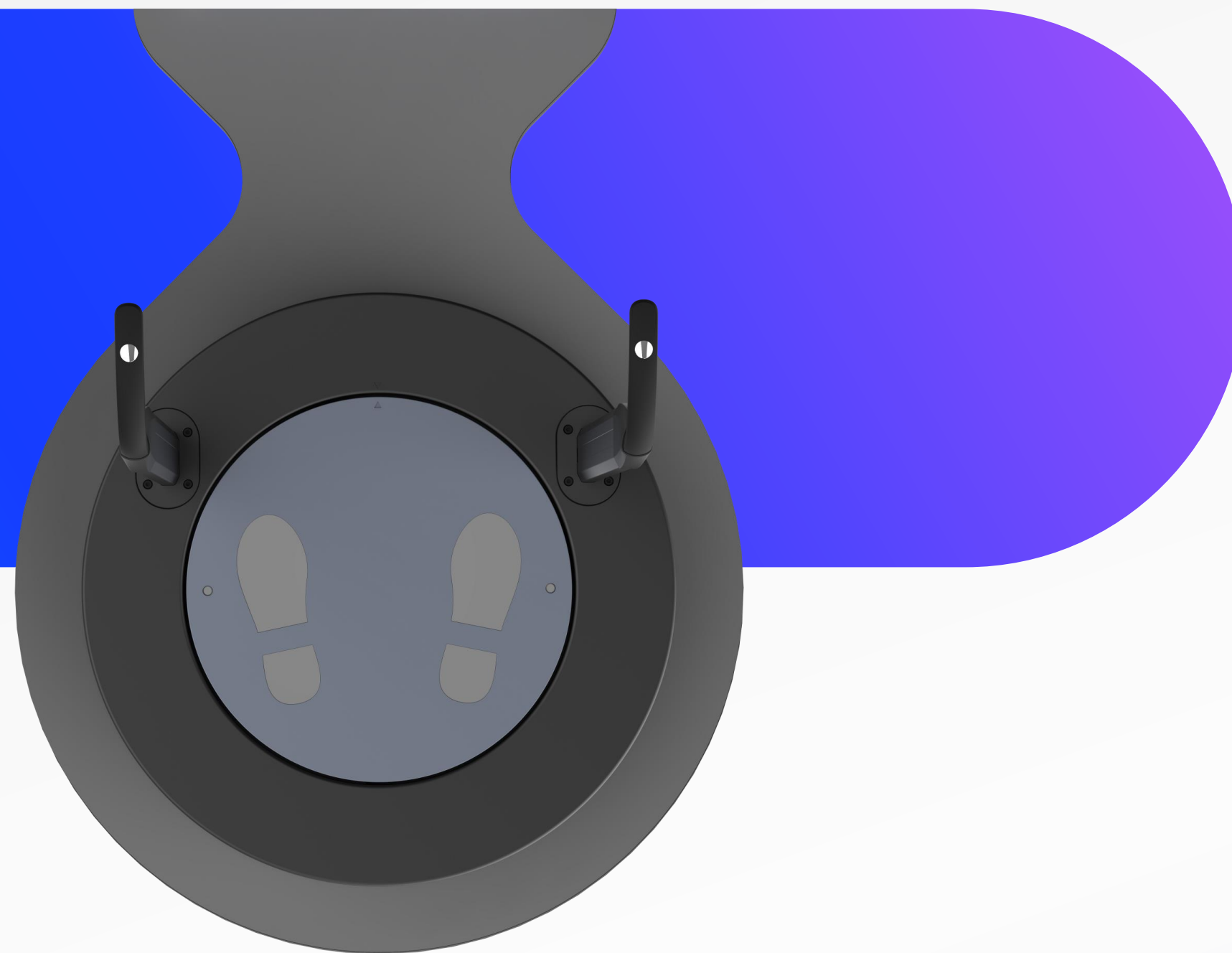
## Marketing Enablement

Leverage AI-driven body assessment to attract new customers, integrate with on-site classes, and deliver customized training plans. Help centers build a marketing model of "precise lead generation – customer retention – viral growth," enabling a smooth transition to AI-powered intelligent services.



# High-Precision All-in-One Turntable

Visbody's self-developed high-precision platform integrates 8-electrode, multi-frequency BIA measurement with multi-functional body circumference and posture data capture — delivering a safe, stable, and accurate assessment experience.



## More Accurate Measurement

Eight-electrode, multi-frequency BIA technology enables medical-grade bodycomposition analysis.

## More Comprehensive Data

By integrating 360° AI visual scanning with optical 3D reconstruction technology, the system automatically captures multiple body circumferences and posture data throughrotational measurement.

## More Comfortable Experience

Precision-controlled rotation ensures stable speed; built-in temperature-regulating sensors keep electrode plates warm and comfortable.

# Intelligent Algorithms & Accurate 3D Body Modeling

Integrated BIA + BDA algorithm for accurate body composition analysis;  
high-precision 3D scanning for ultra-detailed human body modeling.



## Integrated BIA + BDA Measurement Algorithm

Proprietary fusion of BIA (Bioelectrical Impedance Analysis) and BDA (Body Density Assessment) delivers more accurate body composition analysis and enhanced data stability.

## World-Leading Human Digitization Technology

Powered by proprietary AI vision and 3D body scanning technology, delivering the highest model precision. Combined with expert-level standards and statistical methods to reconstruct highly accurate and detailed 3D human models.

## Body Shape & Posture Assessment Data

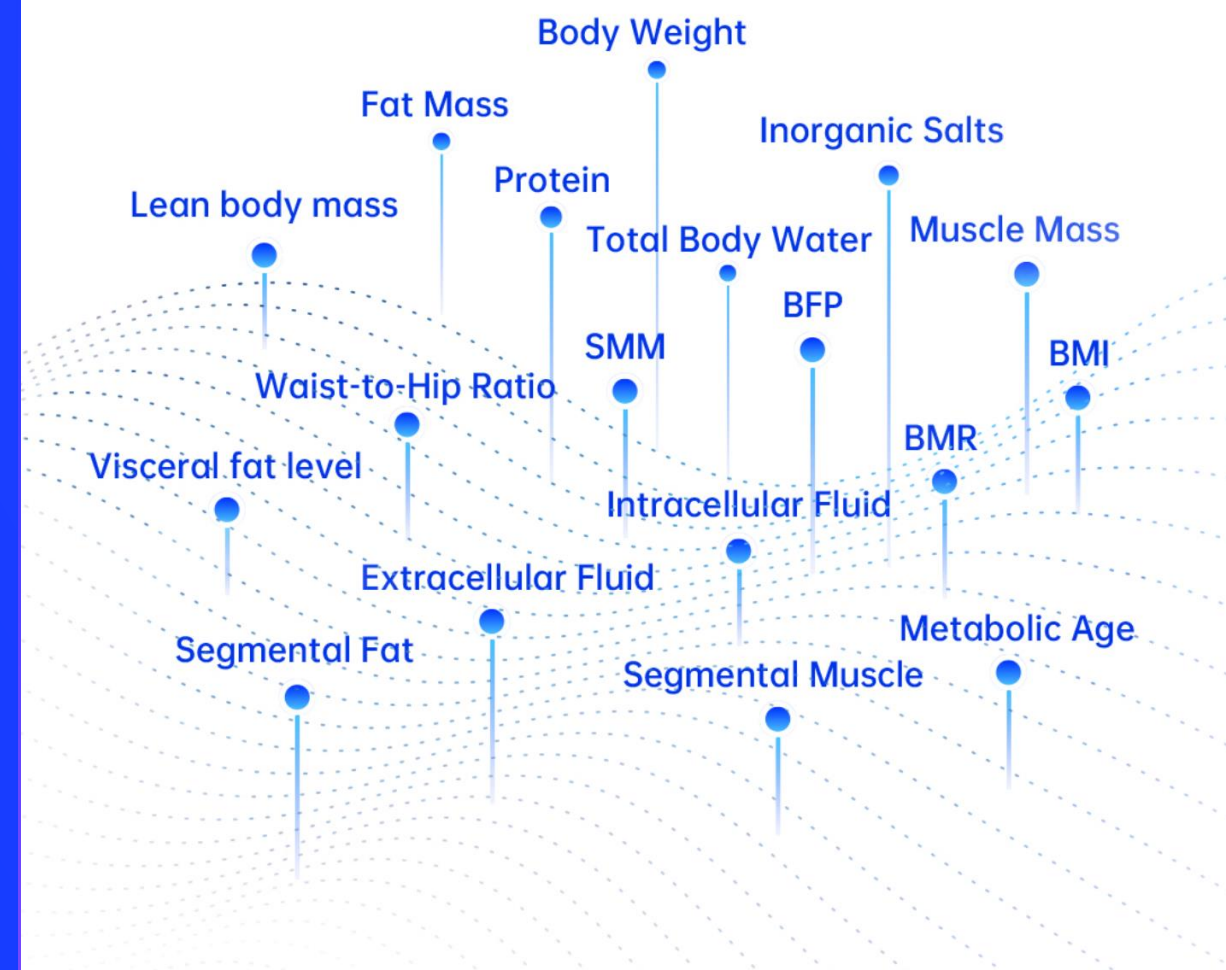
A single scan provides 18 body composition metrics, 14 circumference measurements, 10 posture analysis, a realistic 3D body model, and predictive 3D body shape simulations for a full body evaluation.

# >> Core Functions



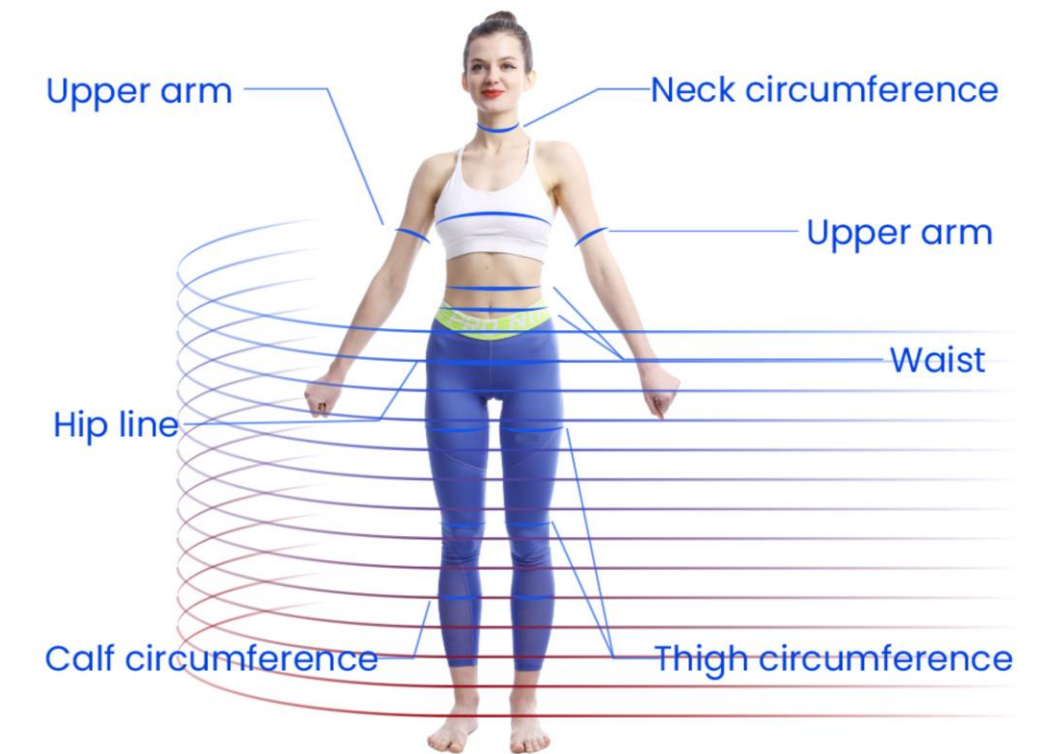
## 360° 3D Body Modeling

Pioneering AI vision and optical 3D reconstruction technology quickly captures body data and generates a realistic 3D human model with detailed body features.



## 18 Body Composition Metrics

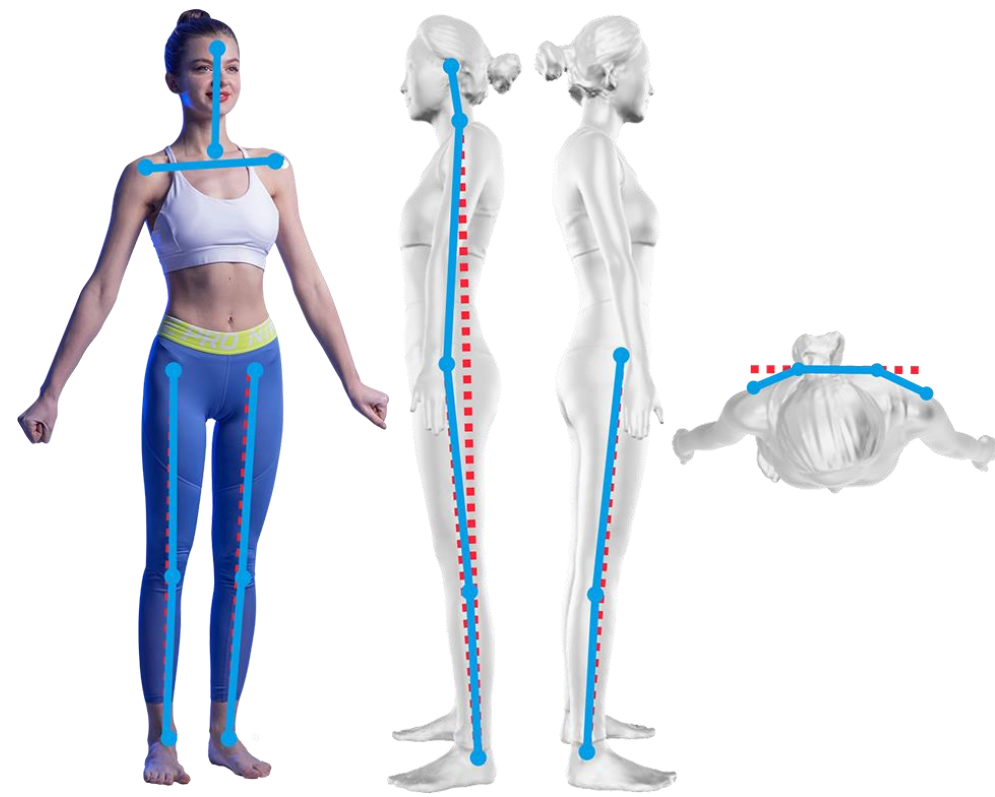
Proprietary 8-electrode, multi-frequency BIA delivers more accurate, consistent, and valuable data than traditional devices.



## 14 Circumference Measurement

Powered by a depth camera and proprietary algorithm, it quickly captures 14 body circumferences with millimeter precision—no manual input, no human error.

## >> Core Functions



### 10 3D Posture Assessment

---

Automatically evaluates head, shoulders, knees, leg shape, pelvic tilt, and more using 3D skeletal point detection, clearly revealing posture issues.



### 3D Body Shape Prediction

---

Uses extensive clinical and body model data to intelligently forecast body shape changes, visually presenting ideal results to motivate users.



### 3D Body Shape Comparison

---

Automatically compares fat and muscle changes across up to 8 measurements with realistic 3D models for clear, accurate tracking.

# »» Core Functions



## Smart Gesture Control

---

Smart voice, gesture, and motion recognition enable hands-free operation for efficient coaching and full user freedom.



## Three-Level Foot Heating Sensor

---

Foot electrodes with adjustable heating in 3 levels keep plates warm for a comfortable measurement experience.

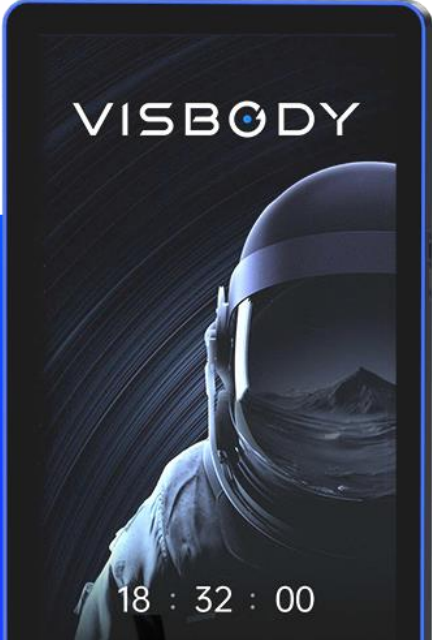


## AWS · Lifetime Data

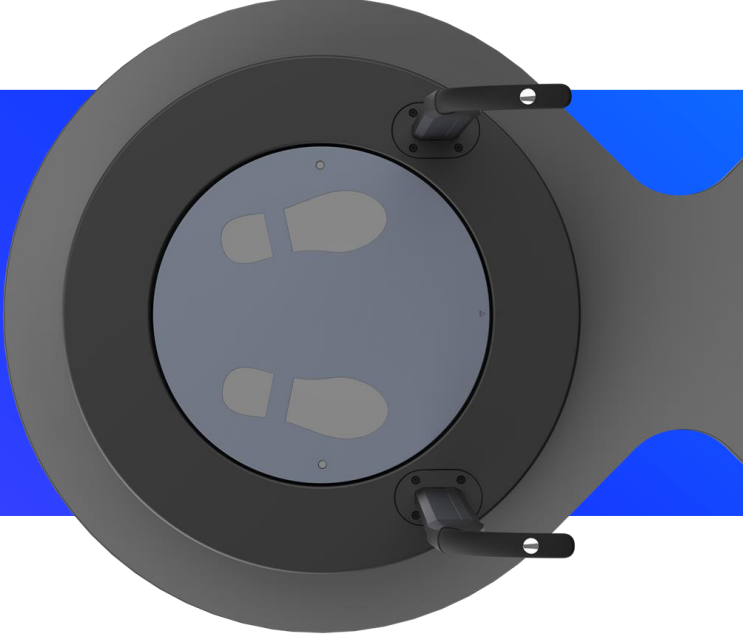
---

Secure cloud storage with lifetime access. View reports anytime on mobile or PC for effective improvement plans.

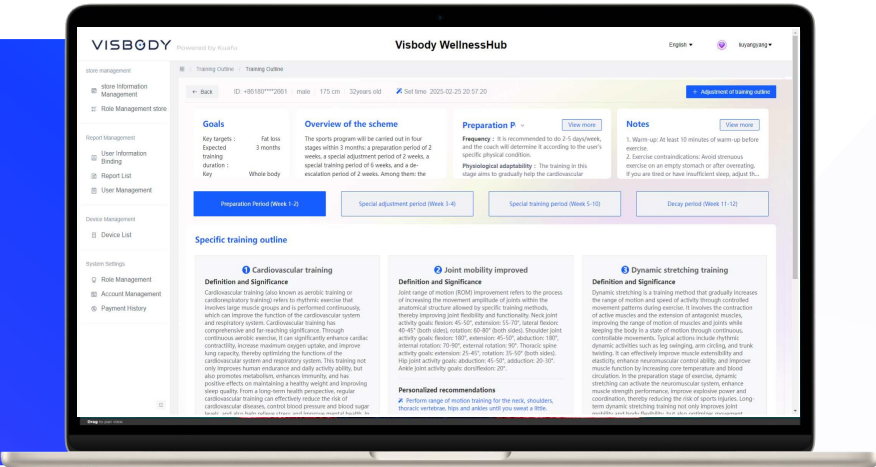
Premium Mirror-Finish Body



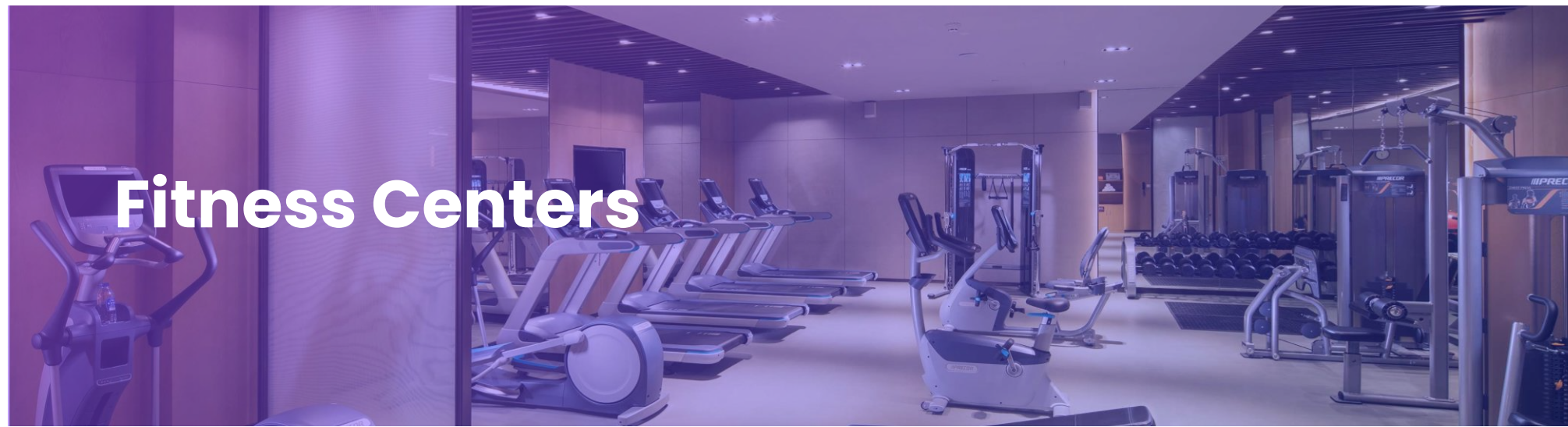
High-Precision All-in-One Turntable



Cloud, PC & Mobile Smart Connectivity



# Applicable Scenarios





## Product Specifications

1. Power Supply: 100~240V, 50~60Hz
2. Rated Voltage: 220V/50Hz
3. Rated Power: 120W
4. Operating Temperature: 10°C~40°C
5. Weight Measurement Accuracy:  $\pm 0.1\text{kg}$
6. Body Fat Percentage Accuracy:  $\pm 0.1\%$
7. Network Interface: Ethernet
8. Maximum Measurable Height: 200cm
9. Sensor Type: 3D Depth Vision Sensor
10. Maximum Measurable Weight: 175kg
11. Screen Size: 27 inches; Resolution: 1920×1080
12. Footplate Heating Module Temperature Range: 25°C~35°C

## Applicable User

1. Height Measurement Range: 70~200cm
2. Weight Measurement Range: 10~175kg